

Quiz 1 (Monday Afternoon)

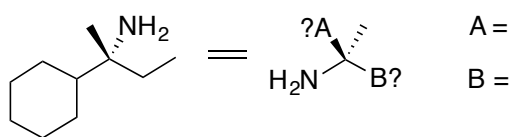
Name:

Recitation Instructor:

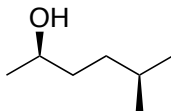
*The following quiz is 20 points. You have 20 minutes to complete it. Good Luck!*

1. Draw the molecule 2-methylpentane using line-angle notation (5 points)

2. Finish redrawing the following molecule (5 points)



3. Circle all stereogenic centers in the following molecule and name them (R) or (S)? (5 points)



4. Redraw the following Newman projection in standard line-angle notation, making sure to accurately reflect the configuration and any stereochemistry represented. (5 points)

